

Assembly Instructions

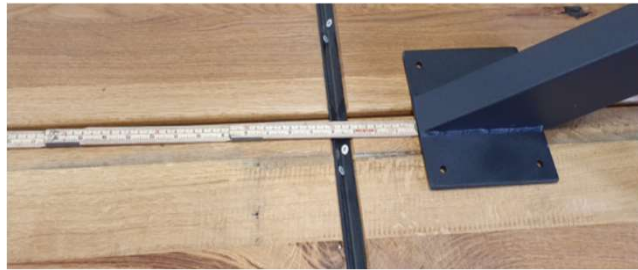
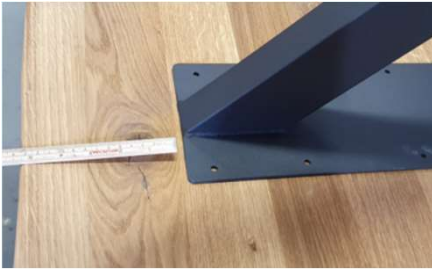
STAR - OPUS



Assemble the frame on the underside of the table using bolts, washers, and nuts, but do not fully tighten the screws.



Place the frame in the center of the tabletop, ensuring it is equidistant from both sides.



Screw on the middle part first, then attach both ends. The provided wood screws can be screwed directly into the tabletop.



Afterwards, tighten the bolts and nuts on the frame.



Adjust the screws so that the table rests evenly on all four legs.

If stability cannot be achieved with the adjustable feet, it may be necessary to loosen the frame from the tabletop and slightly adjust the position of the long legs.